

# TELESCOPE BOXES

## International Box Code: 03

Telescope boxes usually consists of more than one piece, such as a separate top, or top and bottom, that fit over and slide onto a body.

The International Box Code calls these boxes Telescope-Style. The truck and rail *Classifications* call them Telescope Boxes [See: *Item 222-5 (b)*, p. 83; *Rule 41, Sec. 4 (b)*, p. 97] if the cover extends over at least two-thirds of the depth, and Boxes with Covers [See: *Item 222-5 (c)*, p. 83; *Rule 41, Sec. 4 (c)*, p. 98] if the cover extends over less than two-thirds of the depth.

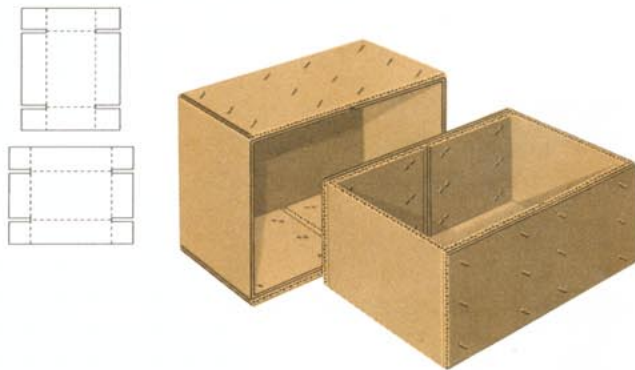
## Full-Telescope Design-Style Box — FTD

### International Box Code: 0301

The two-piece box is made from two scored and slotted rectangular blanks, with minimal manufacturing waste.

The full-depth cover slides completely over the body, providing extra thicknesses of board on all side and end panels. This provides compression strength suitable for high stacking of fragile articles.

“Design style” refers to the joining of flaps on the side or end panels, rather than on the top or bottom of the box. The advantage is a flat bottom (and top), suitable for paper, books and similar products.



## Full-Telescope Half-Slotted Box — FTHS

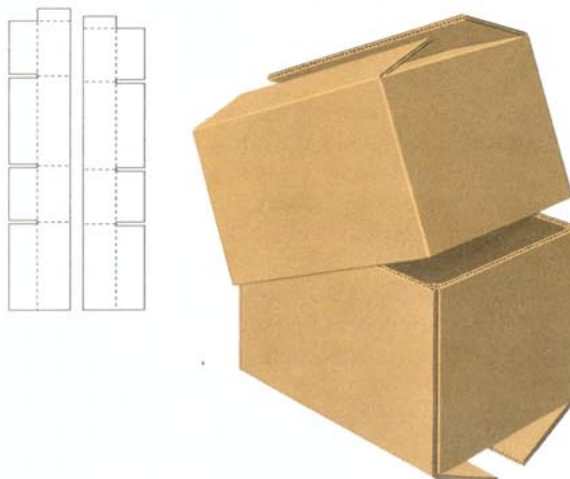
### International Box Code: 0320

Each of the two box blanks resembles a regular slotted container, but with only one set of flaps. They are both slotted on one edge rather than two, accounting for the term “half-slotted”. The depth of the cover piece is slightly more than the depth of the body, so that the cover will slide over the body to its full depth.

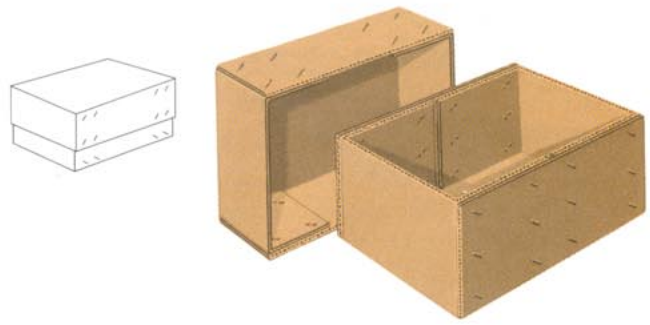
Two thicknesses of corrugated board on all four sides provide product protection and stacking strength.

The style is used extensively for fresh fruits and vegetables, frequently with ventilation holes for the circulation of cool air. At destination, the cover is easily removed so that the contents can be examined.

A single half-slotted box (**International Box Code: 0200**) is sometimes used as a cover for palletized products, such as refrigerators or washing machines.



## Partial-Telescope Design-Style Box — PTD

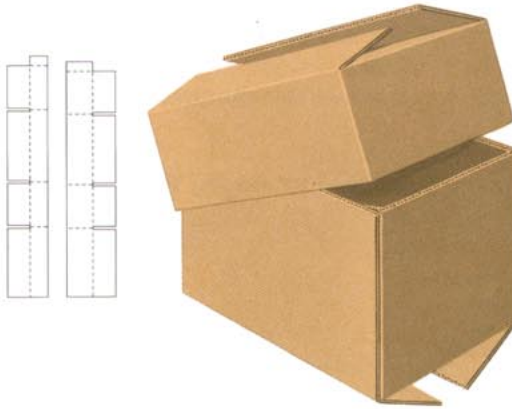


## Partial-Telescope Half-Slotted Box — PTHS

The only difference between the full telescope and the partial telescope is the depth of the cover. For a partial telescope, it must be less than, but at least two-thirds of, the depth of the body.

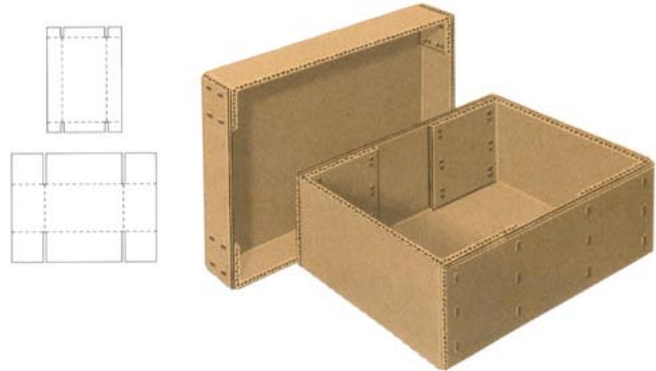
With two layers of corrugated board over a majority of the side and end panels, the style has great resistance to bulging when subjected to overhead weight.

The style is suitable for products that settle or that may be safely compressed. The box is sometimes overfilled, and the style's flexibility allows it to remain intact as the settling or compression take place.



## Design-Style Box with Cover — DSC

International Box Code: 0306



## Half-Slotted Box with Cover — HSC

International Box Code: 0312

The covers of both of these styles extend over less than two-thirds the depth of the body, distinguishing them from the partial-telescope styles.

The half-slotted box frequently uses a design-style cover, because it is easier to close the smaller side flaps.

These boxes are frequently used for both shipping and shelf storage, or other applications where the cover must be removed and replaced frequently.



## Double-Cover Box — DC

### International Box Code: 0310

A shell or tube forms the body. The two interchangeable covers are usually design-style.

The pieces are shipped flat to the user, who opens the tube and sets up the covers.

The style is frequently used for tall or heavy products that would be difficult to lower into a box. The item is placed on the bottom cover, and the shell is lowered over the product.

The style is also used for granular and other free-flowing products. When the number of articles or quantity of product varies, the tube can be cut down to the level of the contents.



## Interlocking Double-Cover Box — IC

### International Box Code: 0325

Flanges on the body, folded together (interlocked) with flanges on the covers, are held in place with strapping.

The style offers the same ease of packing provided by the double-cover box, with the assurance that the covers will not separate from the body. This feature offers advantages for the movement of large or heavy products such as washers, dryers, refrigerators, water heaters, vending machines, and some hazardous materials.

