

## Regular Slotted Container — RSC

### International Box Code: 0201

All flaps are the same depth, and the two outer flaps (normally the lengthwise flaps) are one-half the container's width, so that they meet at the center of the box when folded.

This is a highly efficient design. The only overlaps are the flap for a glued or stitched manufacturer's joint, and the inner (or minor) flaps. There is very little manufacturing waste.

The RSC can be used for most products, and is the most common box style.

If the product requires a flat, even bottom surface, or the protection of two full layers, a fill-in pad can be placed between the two inner flaps.



## Overlap Slotted Container — OSC

### International Box Code: 0202

All flaps are the same depth, and the outer flaps overlap by 1 inch or more.

The box is easily closed, usually with staples driven through the overlap area.

This style is used when the length of the box is considerably greater than the width, resulting in a long gap between the inner flaps. The sealed overlap helps to keep the outer flaps from pulling apart.

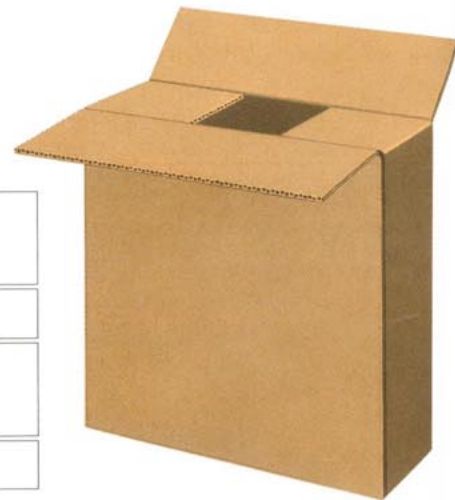
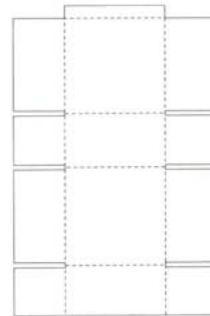


## Full-Overlap Slotted Container — FOL

### International Box Code: 0203

All flaps are the same depth, and their depth equals the width of the box. When closed, the outer flaps come within one inch of complete overlap.

The style is especially resistant to rough handling. Stacked on its bottom panel, the overlapping flaps provide added cushioning. Stacked on its side, the extra thicknesses provide added stacking strength.



## Center Special Slotted Container — CSSC

### International Box Code: 0204

Inner and outer flaps are cut to different depths, with the depth of the inner flaps equal to half the length, and the depth of the outer flaps equal to half the width. Both pairs of flaps meet at the center of the box.

The style is especially strong because both the top and bottom have full double thicknesses of corrugated board. The inner flaps, with no gap, provide a level base for the product.

A variation of the Center Special Slotted Container is the **Side Special Slotted Container—SSS**. All pairs of flaps meet, but not at the center of the box.



## Bag-in-Box

A number of design concepts are combined in this packaging innovation. A liquid, semi-liquid, granular or powdered product is placed in a plastic bag to prevent sifting or leakage, and the bag is placed in a box for protection, ease of handling and stacking strength.

Bag-in-box is used for many products, including wine, milk, paint, wallboard compound, detergent powders and pet food. The plastic and its seal must be the proper type for the product.

Many bags incorporate dispensing devices, and the box can have die-cut holes or perforations to provide access and to position the dispenser for use.

Advantages of bag-in-box include its light weight in comparison to other forms of packaging, the rectangular shape that allows full use of shipping and storage space, the fact that it can be stored flat until it is used, and the relative simplicity of setup, filling and closure.

As shown, the corrugated structure combines a Center Special Slotted Container with a full-depth sleeve or liner for added protection and stacking strength, plus top and bottom pads for extra product protection. The **International Box Codes** are **0204** for the box, **0904** for the sleeve, and **0901** for the pads. The sleeve and pads might be omitted, depending on the gross weight of the filled package.

The Department of Transportation has authorized bag-in-box styles for certain acids and other corrosives.



## Center Special Overlap Slotted Container — CSO or CSOSC

### International Box Code: 0205

All flaps are the same depth, and their depth equals one-half the length of the box. The length can be no more than twice the width.

When closed, the inner flaps meet at the center of the box, providing a level base and full top protection. Depending on the ratio of length to width, the outer flaps overlap at random, up to full overlap.

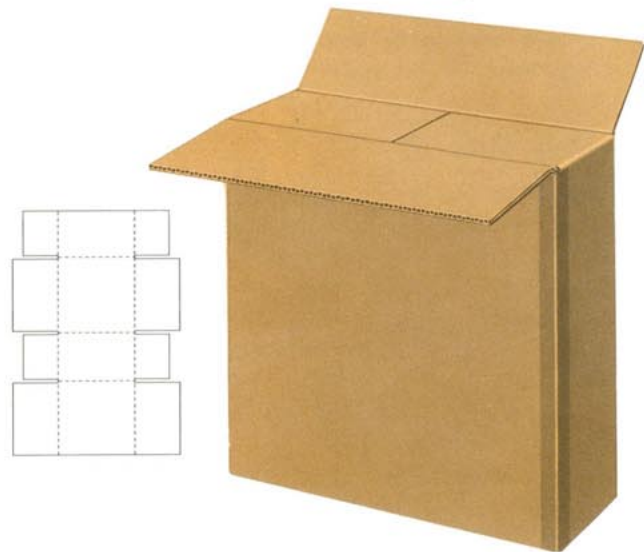


## Center Special Full-Overlap Slotted Container — SFF

### International Box Code: 0206

Inner and outer flaps are cut to different depths, with the depth of the inner flaps equal to half the length, and the depth of the outer flaps equal to the width. When closed, the inner flaps meet at the center of the box, and outer flaps fully overlap.

With three full thicknesses of corrugated board over the entire top and bottom, this style provides extra cushioning when stacked on its bottom, or extra stacking strength when stacked on its side.



## Snap-Bottom Box

### International Box Code: 0216

The top of the box is the same as a regular slotted container. The four flaps that form the bottom panel are die cut. To set up, the user folds the largest bottom panel first, then the two end panels. When the remaining bottom panel is folded and pressure applied near the center, the flap “snaps” into the slot created by the other panels.

The style is convenient for small-volume shippers who do not have automatic set-up equipment. Because the bottom is not fully sealed, it may not be suitable for heavy products.

