

SLIDE-TYPE BOXES

International Box Code: 05

Two or more rectangular, scored pieces of board are folded so that each forms a tube or shell. The pieces then slide into or onto each other to complete the box.

Slide-type boxes are easily opened and closed. They are usually made in small sizes, and used for products shipped via Parcel Post and small shipment services.

The carrier *Classifications* refer to these styles as Slide Style Boxes [See: *Item 222-5 (d)*, p. 83; *Rule 41, Sec. 4 (d)*, p. 98].

Double-Slide Box — DS

International Box Code: 0510

Formed from two pieces of board, the style provides two thicknesses on the side panels for stacking strength, and one thickness on all other panels. The bottom and top surfaces are unbroken.

Very similar, but with a different configuration, is the **Single-Lined Slide**. Here, the two thicknesses are in the end panels. There is no **International Box Code** for this style, but each piece can be identified separately; the outer shell is **0904**, and the inner piece is **0909**.

Triple-Slide Box — TS

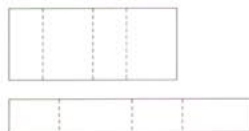
Formed from three pieces of board, the style provides two thicknesses of board on all six panels.

The extra strength and cushioning ability make the box well suited for fragile items, including pharmaceuticals.

The **International Box Codes** for the parts of a Triple Slide Box are **0906** for the outer shell, **0904** for the middle piece, and **0907** for the inner piece.

A similar style with a different configuration is the **Double-Lined Slide**. The **International Box Codes** for the parts are **0904** for the shell, **0909** for the middle piece, and **0907** for the inner piece.

Double Slide



Single Lined Slide



Triple Slide

Double Lined Slide

